

# GLIMS 10

The most widely used laboratory information system in Europe now delivers even more benefits



Your GLIMS high-performance laboratory information system (LIS) allows you to organise and automate all processes exactly as you want them: from order entry and instrument control to results reporting, invoicing and statistics.

By upgrading to the new GLIMS 10, you can now benefit from additional features, modules and architecture carefully designed to meet the needs of today's laboratory.

New technologies and capabilities improve your users' experience, and meet your increasingly stringent security and integration requirements. And GLIMS 10 delivers even more dedicated functionalities for specialties including microbiology, biochemistry and the new GLIMS Genetics module.

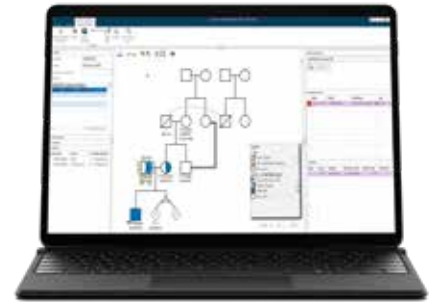
## Cost-effective upgrade for better patient care

With GLIMS 10, we have put 35 years of laboratory experience plus state-of-the-art technologies to work to further improve our modern, user-friendly LIS. Every stakeholder benefits from

the migration to GLIMS 10, which bundles innovation and know-how into a single solution. By simplifying or even eliminating your repetitive daily challenges, GLIMS 10 increases

efficiency and supports you to focus on your ultimate goal: improving patient care.

# Rich functionality for specialties



GLIMS 10 offers dedicated functionalities and capabilities that enable laboratory specialties to benefit from a smooth, efficient workflow that matches their unique requirements.

### GLIMS 10 for Microbiology

- Interfaces with and offers screen synchronization for BD Kiestra™ ReadA, BD Synapsys™ Microbiology Informatics Solution & WASPLab® microbiology laboratory automation systems.
- Transforms manual plate-reading to an efficient, fully automated and digital workflow.
- Optimises biologists' time with rich interfaces that automate microbiology tasks.
- Reduces the potential for human error, increasing patient safety and exam quality.
- Supports a paperless microbiology workflow.

### GLIMS 10 for Biochemistry / Molecular Biology

- Provides worklist support for plate management of microwell plates.
- Offers support for specimen pooling, in which biological specimens from multiple subjects are combined and tested in one single test, such as for COVID-19 PCR testing. This can substantially improve testing efficiency and turnaround time.

### NEW: GLIMS Genetics

The new GLIMS Genetics module covers the entire genetic spectrum with a gene panel, variant results management and pedigree management. It delivers a complete and tailored genetics workflow, minimising the risk of errors with high-level automation.

- Enables family management with a comprehensive drawing pedigree solution for clear analysis.
- Supports automated decision making.
- Includes the GLIMS Genetics Counselling module, with patient management and appointment tools.
- Offers a flexible configuration suitable for small laboratories or large, multi-site networked laboratories.

GLIMS Genetics enables fully integrated, digital workflows for:

- Molecular genetics
- Tumour genetics
- Array CGH, MLPA, PCR, and Sanger sequencing
- Next-generation sequencing
- Future technologies

## Peace of mind for the future

GLIMS 10 secures your existing investments, while preparing you for the future. Rich functionalities, statistical power, stability and

regulatory compliance enable you to optimize processes and reduce costs, while increasing revenues, quality and patient care.

You have the peace of mind of a reliable and future-oriented solution that supports your evolution and growth.

# New benefits offering new opportunities for every laboratory



### Quality management: non-conformities registration

Better identify and control non-conformities, to enhance your continuous quality improvement and compliance with ISO 15189. With GLIMS 10, your administrative staff can interactively document a non-conformity during order entry. They are then guided through the steps to resolve the issue. Any element of an exam that does not conform to requirements can be detected, enabling your staff to take corrective action now, and avoid similar issues in the future.



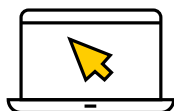
### Business Activity Monitor (BAM)

Quickly and easily visualise and monitor your business activities/workflow processes (including orders, results, actions, reporting, and more) and KPIs, on the interactive dashboard. Progress and performance can be overseen centrally on a single screen.

Any user can easily create and customise a dashboard for their own needs, as well, enabling them to save time and money by optimising their workflows.

The intuitive tool provides:

- Easy querying, with no knowledge of SQL required;
- Real-time overviews of your laboratory's current performance and activities;
- All fully integrated in the application.



### Consult registration

Keep track of consultations with referring physicians and other care providers, with this completely new module!

By structuring the registration of consultations between referrers and lab specialists, this tool helps you to easily document and streamline consult discussions, as well as trainee education. You can customise the layout and content of the consult form, to improve the quality of your consultative service and to ensure guidelines are met.

And you can easily look up consults and statistics, such as how many consultations your laboratory specialists perform each week.



### **Enhanced data privacy and security**

Patient data is by definition sensitive. Securing and protecting them from unauthorised access requires the utmost care. GLIMS 10 leaves nothing to chance with the following new features:

- Transparent data encryption (TDE) helps secure your laboratory's database.
- GLIMS 10 supports LDAP authentication, for hospitals that manage user rights centrally.

And with Clinisys' ISO 27001 certification, you can rest assured that your sensitive data is – and will remain – in safe hands.



### **Interoperability: LOINC**

In addition to supporting all common international standards (HL7, CDA, FHIR, HPRIM, LDT, ASTM and Edifact, and SNOMED-CT terminology), GLIMS 10 also provides full support for LOINC coding. LOINC enables clinical results to be exchanged and consolidated, using a set of universal codes and structured names.

With LOINC, you can further improve patient safety, while eliminating the risk of unnecessary duplicate tests.

LOINC also enables your lab to comply with specific local regulations, such as Secur de la Santé in France and eHealth in Belgium.



### **1+1=3: GLIMS 10 + CyberLab and DaVinci**

The Clinisys portfolio includes solutions that support the entire workflow for all lab specialties, end to end, from order entry and sample collection, to result consultation – and everything in between.

When using GLIMS 10 with the CyberLab order entry and result consultation solution or the DaVinci anatomical pathology LIS, data registered in one system is available in real time in the other, with no duplication. Users of each system have access to additional information on the patient at their fingertips, enabling a faster and more efficient workflow.



### **Robust, agile and cloud-ready**

GLIMS 10 has a modern, robust, scalable and cloud-ready infrastructure, that uses the Clinisys.NET browser framework. It delivers high availability, high performance and agility, for your laboratory's needs today and in the future. The 64-bit server further enhances performance, uptime and the ability to handle large data sets.